



Introducing the world's first **Mobile Tire Tread** scanner



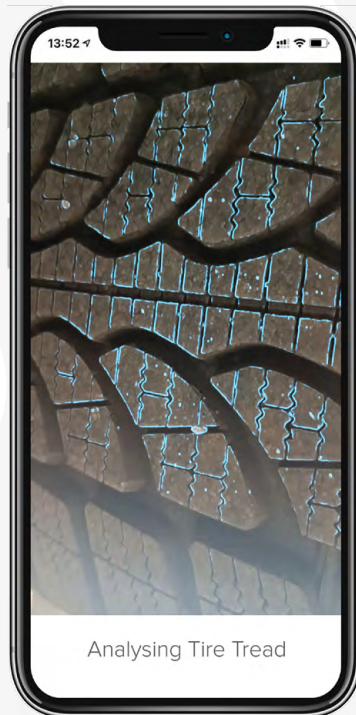
How it works

Using state-of-the-art AI and computer vision, Anyline's breakthrough innovation makes it easy to accurately measure tire tread depth and wear - using any mobile device. Tire tread scanning can be integrated into workforce or consumer-facing apps, helping you make sure that your customers are always safe on the roads.

1

Scan Tire Tread

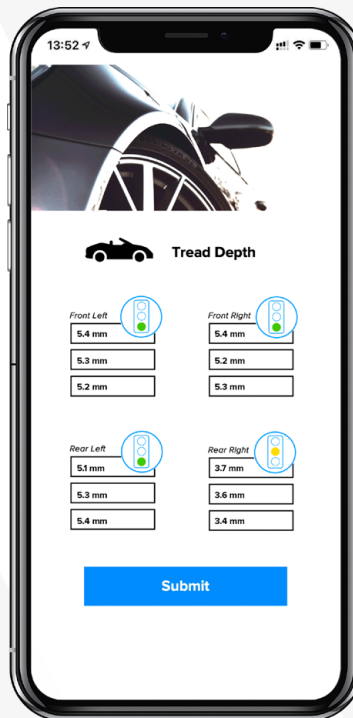
Simply swipe your device over the tire



2

View Result

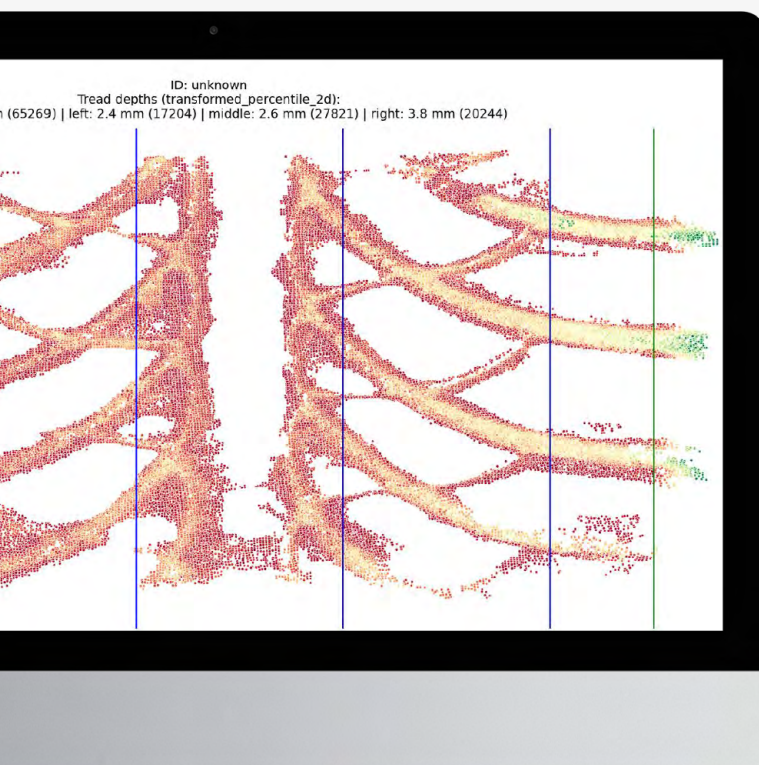
Receive your results in seconds



3

Receive Report

Access detailed digital report of each scanned tire



The old way

Doing things the old way is expensive and inefficient...



Manual Tread Depth Gauge

Results vary for different users

Requires manual data entry

Important data may be lost



Dedicated Digital Measurement Device

Expensive to buy and maintain

Yet another tool in the workshop

Risk of hardware obsolescence



Drive-Over Measurement System

Prohibitively expensive

Takes up a lot of space

Slow process

The ANYLINE way

Scanning with Anyline is simple and reliable



Delivers **accurate** and consistent tread depth measurement



Provides **objective** digital evidence of each tire measurement



Offers **instant** recommendation if tire needs to be changed



Works on any **standard** mobile device or camera enabled TPMS

Why customers choose Anyline



Increase profits and maximize your market share



Create a unique value proposition for customers



Decrease your time-to-market for new ideas



Empower advanced digital solution features



Reduce & save development & maintenance costs



Partner with the leading innovator in mobile data capture

Discover more

Get in touch with Anyline today to begin your mobile tire tread scanning journey

anyline.com/products/tire-tread-scanner

